



Sam Sample
04/12/2012

CMAP

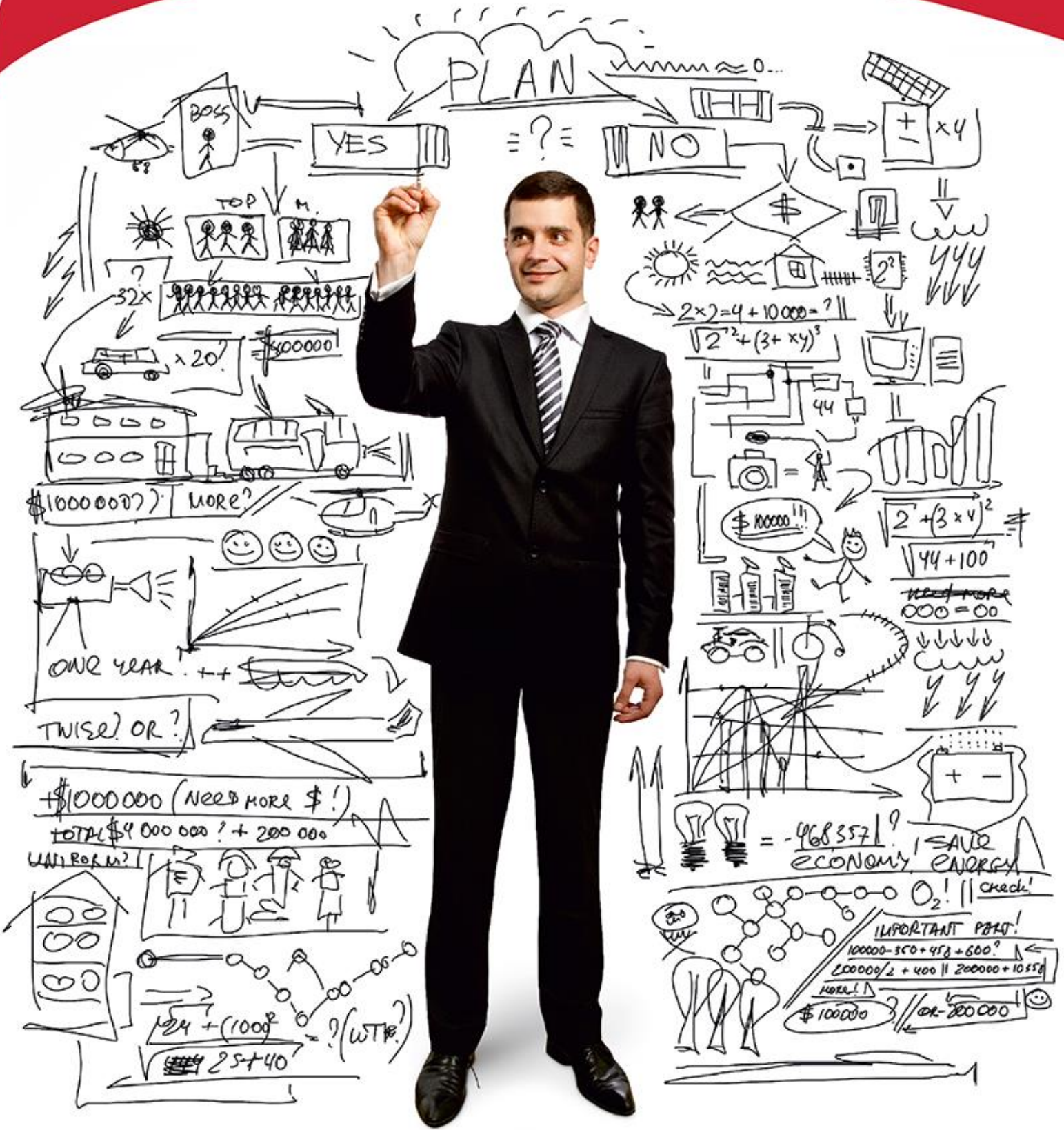
*Career Motivation
Analysis Profile*

This report uses the results of the Occupational Interests Profile Plus (OIP+). The OIP+ and all the content related to it are the intellectual property of Psychometrics Limited. All rights reserved 2013.

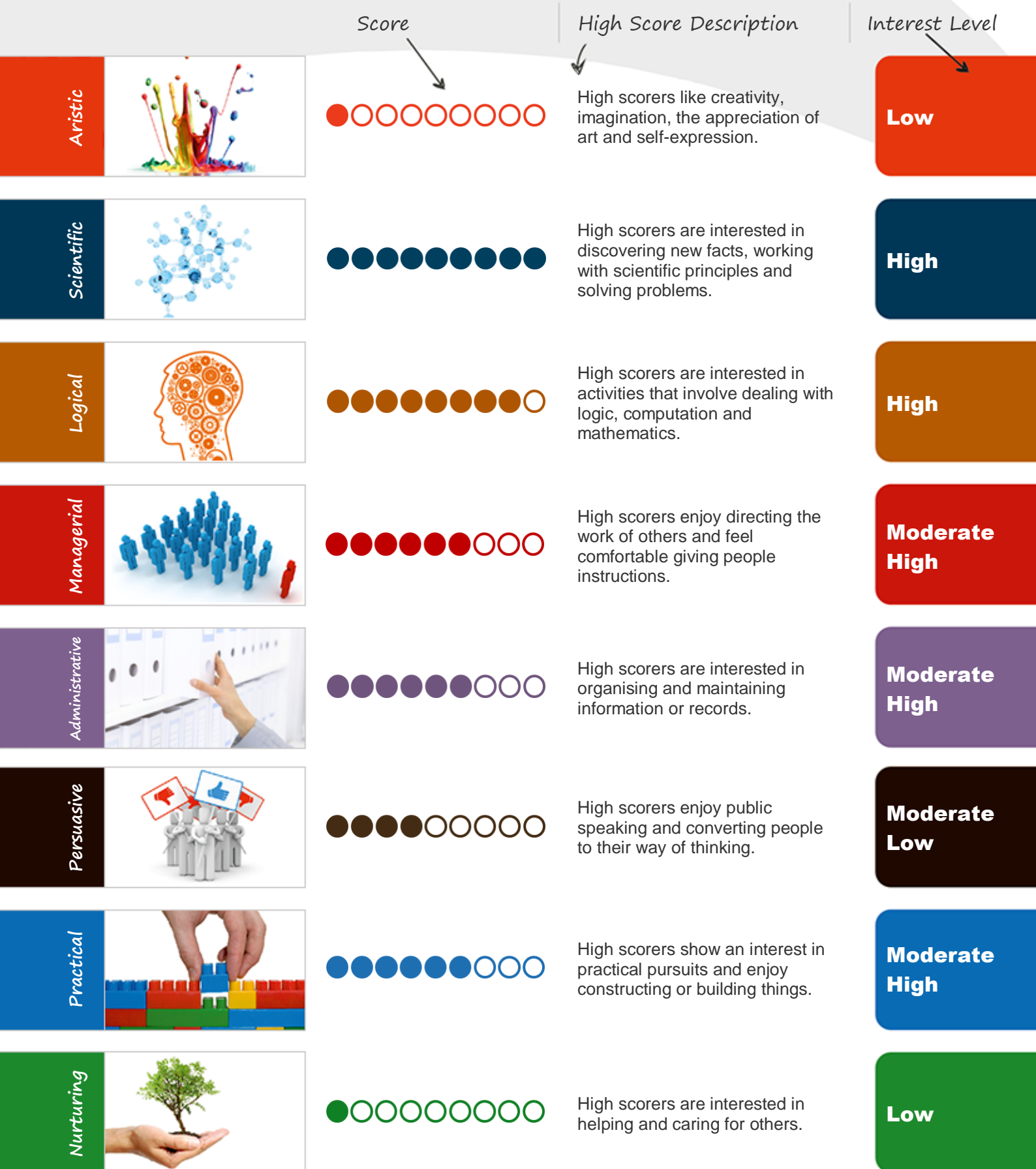
Your Career Interests Profile

The CMAP report measures eight broad patterns of career interests: Artistic, Scientific, Logical, Managerial, Administrative, Persuasive, Practical and Nurturing.

Your interest scores are presented on the next page with a brief description of each of the interest areas. Most people have interests that fall into more than one category. The Career Interest themes with the highest scores represent the type of work you are most likely to enjoy.



Career Interests Profile Chart



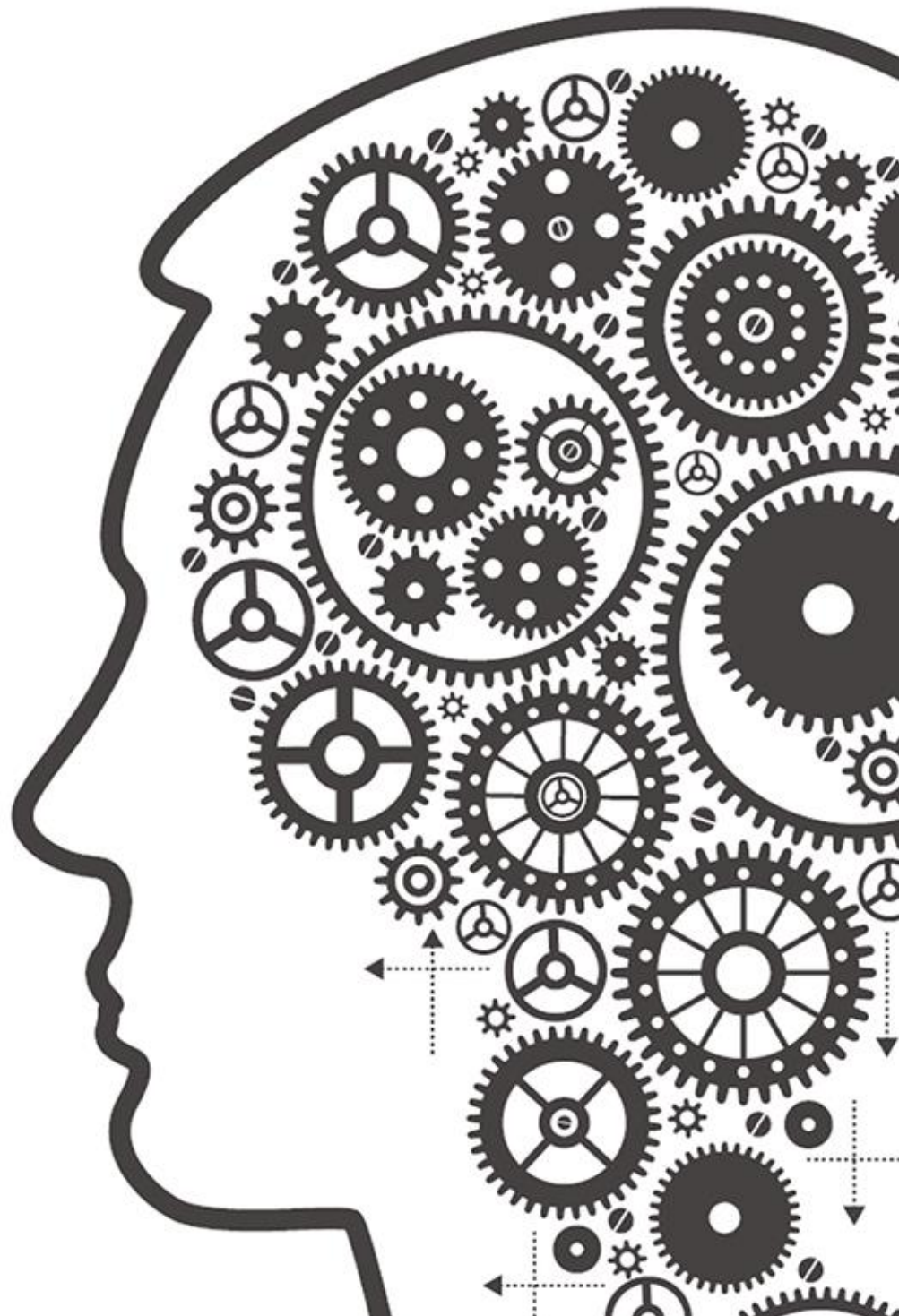
Please note

- A low score on the theme indicates that you are expected to be less interested in the activities related to the theme.
- A middle score on the theme indicates that your interest in the activities related to the theme is similar to most people; neither greatly interested nor greatly disinterested in the activities.
- A high score on the theme indicates that you are expected to enjoy the activities related to the theme.

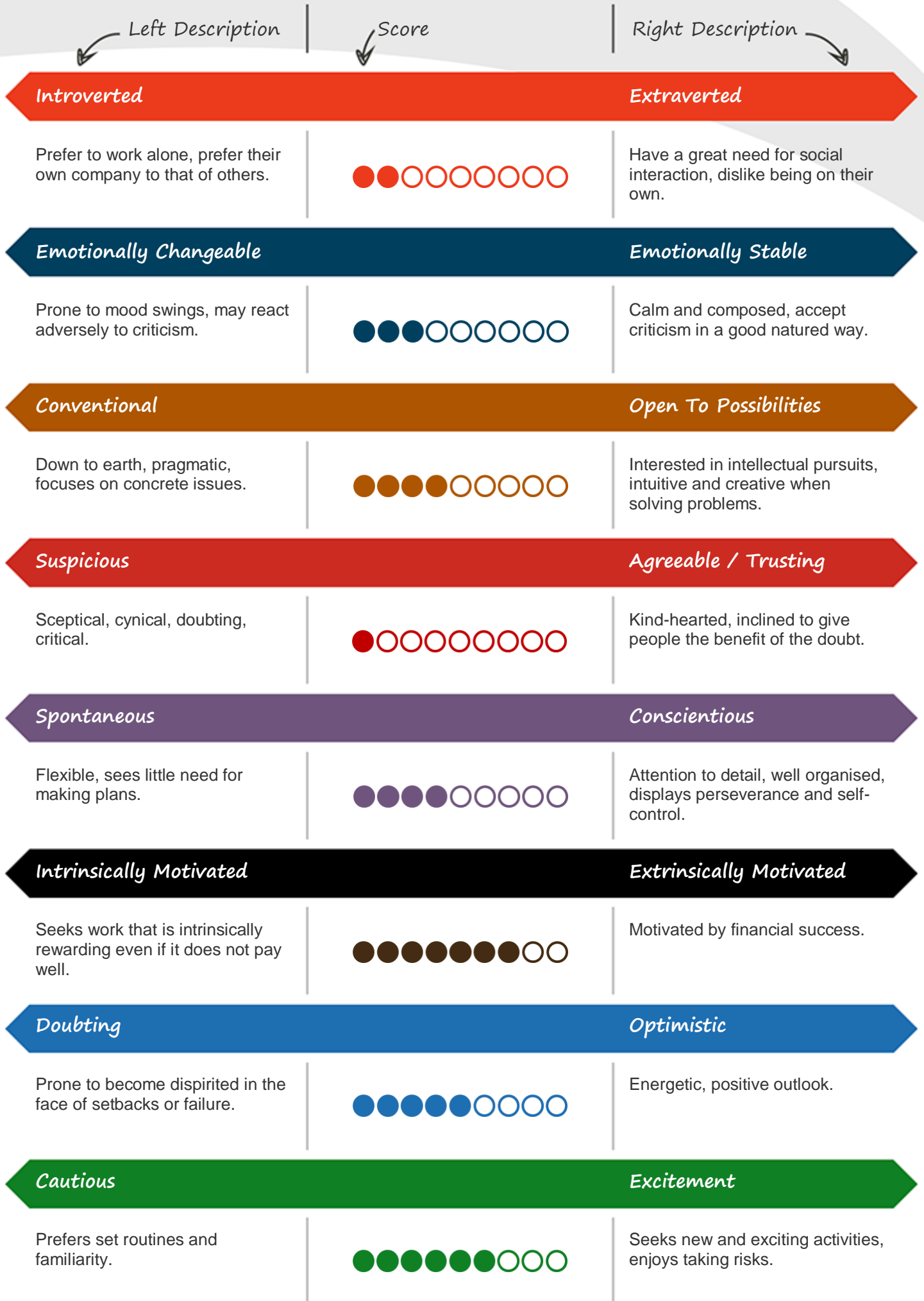
Your Personal Work Needs Profile

Work Needs describe your personal qualities and styles. They help in identifying career options that cater to your personality and way of working.

Your Work Needs scores are presented on the next page with a brief description of the eight personal characteristics being measured. Your high and low needs are those that set you apart from others.



Personal Work Needs Profile Chart



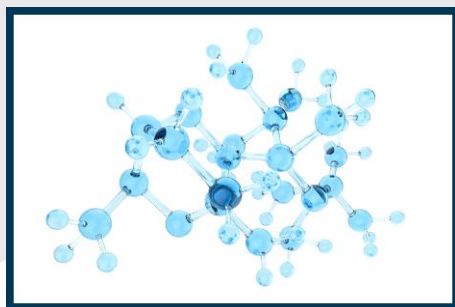
Suggestions for Vocational Exploration

The career suggestions in this report are based on the assessment of your broad interest areas and personal work needs. Career suggestions are useful in gaining clarity and direction for those who need to pursue higher education in order to achieve their career goals. Career suggestions are categorised by the general ability level required for the job. Use the recommendations from your ability test results to help identify the level most appropriate for you.

We encourage you to use the services of a trained career guidance counsellor to help you find out more about the suggested careers and how they may suit your preferences and skills.



Key Career Interest Areas



Primary Interest Area: **Scientific Roles**

Attracted to:

Jobs which involve scientific pursuits including Physics, Chemistry, Medicine and laboratory work.

Career Motivator:

Discovering new facts.

You have a very strong interest in science and technology and, as such, you are likely to enjoy working in a scientific or technical role. This may include laboratory work, pure or applied scientific research work (in a natural or life science), or any one of a number of roles that involve the application of scientific knowledge to solve day-to-day problems (e.g. geology, metallurgy, etc.) However, you should be aware that most occupations in this field require a high level technical skills and knowledge, with many requiring advanced academic study. Therefore, when considering scientific occupations it is worth exploring the professional training that the role requires and the entry requirements for embarking on such training. However, even if you decide not to become a professional scientist, you may enjoy working as a scientific technician, or in a support or accompanying role. Depending upon your other occupational interests you may also wish to consider other occupations that have a scientific component to them, such as selling or marketing scientific or technical equipment, editing scientific books or journals, etc.

In addition to this, your work needs profile indicates that you are likely to focus on observable facts and real world issues, though you may not be as open to theoretical possibilities as most people.

Furthermore, your profile indicates that you are as likely as the next person to anticipate success. Approaching setbacks in a fairly positive way, you nonetheless know when to cut your losses and move on when necessary. Consequently you are likely to enjoy roles where you have attainable goals to work towards.

Vocational Recommendations:

Job Code	Job Title	Profile Match
Jobs with a high ability requirement		
17-2072.00	Electronics Engineer	75%
17-2031.00	Biomedical Engineer	73%
19-2012.00	Physicist	73%
17-2061.00	Computer Hardware Engineer	71%
17-2199.03	Energy Engineer	71%
17-2161.00	Nuclear Engineer	71%
17-2051.00	Civil Engineer	70%
17-2071.00	Electrical Engineer	70%
Jobs with a moderate ability requirement		
17-3023.01	Electronics Engineering Technician	61%
19-4021.00	Biological Technician	59%
19-4031.00	Chemical Technician	59%
19-4011.01	Agricultural Technician	54%
17-3023.03	Electrical Engineering Technician	54%
17-3025.00	Environmental Engineering Technician	52%
29-2012.00	Medical and Clinical Laboratory Technician	50%
19-4041.01	Geophysical Data Technician	48%

Key Career Interest Areas



Secondary Interest Area: **Logical Roles**

Attracted to:

All Information Technology jobs or jobs which involve data analysis such as statistics or economics.

Career Motivator:

Solving analytical problems.

Having a very strong interest in working with numerical data and using logic to solve analytical problems, it is likely that you will enjoy mathematics or computer studies. Inclined to have a natural affinity for such areas, you may wish to consider the wide range of roles that are available in IT. These might include working in IT support, on a help desk, or at a higher level working as a computer programmer or systems analyst. If you have a strong interest in any other occupational areas, you might wish to consider a career that combines your interest in computers, mathematics, logic and working with numbers, with your other interests. For example, if you have a strong interest in practical and mechanical areas of work you may be attracted to working on engineering applications or electronics, or if you have a strong interest in science, you may be interested in considering work that involves developing computer or statistical models of scientific processes. Expressing a strong interest in data analysis, roles in statistics, economics, or related areas may appeal to you. Jobs in accounts, finance or banking are also likely to be attractive to you, particularly if you have an interest in administrative or clerical work.

In addition to this, your work needs profile indicates that you are likely to focus on observable facts and real world issues. Consequently, you may not be as open to theoretical possibilities as most people.

That being said, your work needs profile indicates that you have a need for variety and excitement. As a result, you may become a little bored with jobs that are very predictable and you may wish to consider roles that offer sufficient variety and change to provide the stimulation that you need.

Vocational Recommendations:

Job Code	Job Title	Profile Match
Jobs with a high ability requirement		
17-2072.00	Electronics Engineer	75%
19-2012.00	Physicist	73%
15-1031.00	Computer Software Engineer, Applications	71%
17-2061.00	Computer Hardware Engineer	71%
25-4011.00	Archivist	71%
17-2199.03	Energy Engineer	71%
15-1099.02	Computer Systems Engineer/Architect	70%
15-1099.06	Geospatial Information Scientist and Technologist	70%
Jobs with a moderate ability requirement		
15-1099.04	Web Developer	70%
15-1041.00	Computer Support Specialist	61%
17-3023.01	Electronics Engineering Technician	61%
49-2091.00	Avionics Technician	59%
15-1099.05	Web Administrator	59%
19-4031.00	Chemical Technician	59%
15-1081.00	Network Systems and Data Communications Analyst	57%
15-1099.01	Software Quality Assurance Engineer and Tester	54%

Summary Vocational Recommendations:

Jobs with a high ability requirement

The following list of jobs presents your top high ability job matches regardless of interest area.

Job Code	Job Title	Profile Match	Artistic	Scientific	Logical	Managerial	Administrative	Persuasive	Practical	Nurturing
17-2072.00	Electronics Engineer	75%	●	●					●	
17-2031.00	Biomedical Engineer	73%	●						●	
19-2012.00	Physicist	73%	●	●						
15-1031.00	Computer Software Engineer, Applications	71%			●				●	
17-2199.03	Energy Engineer	71%	●	●					●	
17-2061.00	Computer Hardware Engineer	71%	●	●					●	
17-2161.00	Nuclear Engineer	71%	●						●	
25-4011.00	Archivist	71%			●		●			
17-2071.00	Electrical Engineer	70%	●	●					●	
17-2011.00	Aerospace Engineer	70%	●	●					●	
15-1099.02	Computer Systems Engineer/Architect	70%			●					
19-1020.01	Biologist	70%	●							
15-1099.06	Geospatial Information Scientist and Technologist	70%	●	●						
19-2021.00	Atmospheric and Space Scientist	70%	●							
17-2041.00	Chemical Engineer	70%	●						●	
17-2199.04	Manufacturing Engineer	70%	●	●					●	
19-1011.00	Animal Scientist	70%	●							
19-1023.00	Zoologist and Wildlife Biologist	70%	●							
17-2051.00	Civil Engineer	70%	●						●	
19-1012.00	Food Scientist and Technologist	68%	●						●	

PSYTECH
INTERNATIONAL

CMAP

Career Motivation Analysis Profile